

VISION

To build a market-driven seed industry for the production and distribution of high quality and improved planting materials that are available, accessible and affordable to all farmers.

MISSION

To transform the Nigerian Seed System into a leading seed industry in Sub-Saharan Africa worthy of generating foreign exchange, key employer of labour and contributing positively to the country's economy.

Table of Contents	Page
List of Acronyms.....	3
List of Tables.....	4
List of Figures.....	5
Forward by O.A.Olatokun, Ag. Director General, NASC.....	6
Executive Summary.....	7-8
Introduction of the National Agricultural Seeds Council (NASC).....	9-10
Seed Coordination and Management Services Department.....	11-15
Seed Certification and Quality Control, Crop Registration &Release Dept.	16-19
Seed Industry Development, Technical Support & Commercial Services Dept.	20-22
Seed Information, Data Management & Capacity Building Dept.	23-33
Finance and Administration Department.....	34-36

LIST OF ACRONYMS

ADPs	Agricultural Development Programmes
AGRA	Alliance for a Green Revolution in Africa
ATA	Agricultural Transformation Agenda
BS	Breeder Seed
CBOs	Community Based Organization
CS	Certified Seed
CSTL	Central Seed Testing Laboratory
ECOWAS	Economic Community for West Africa States
FAO	Food and Agriculture Organisation (FAO) of the United Nations
FCT	Federal Capital Territory
FS	Foundation Seed
GES	Growth Enhancement Support Scheme
Ha	Hectare
IAR	Institute of Agricultural Research, Zaria
IARCs	International Agricultural Research Centres
IAR&T	Institute of Agricultural Research and Training, Ibadan
ICRISAT	International Crops Research Institute for the Semi- Arid Tropics
IFDC	International Centre for Soil Fertility and Agricultural Development
IITA	International Institute for Tropical Agriculture
Kg	Kilogramme
LCRI	Lake Chad Research Institute, Maiduguri
MT	Metric Tonnes
NAQS	National Agricultural Quarantine Services
NASC	National Agricultural Seeds Council
NARIs	National Agricultural Research Institutes
NCRI	National Cereal Research Institute, Badeggi
NRCRI	National Root Crops Research Institute
NGOs	Non Governmental Organizations
SEEDAN	Seed Entrepreneurs of Nigeria
VCU	Value for Cultivation and Use
WARDA	West African Rice Development Association (Africa Rice Centre)
WAAPP	West African Agricultural Productivity Programme
WASP	West Africa Seed Project
WECARD	West and Central African Council for Agricultural Development
YIIFSWA	Yam Improvement for Income and Food Security in West Africa Project

Table	List of Tables	Page
1:	ATA-GES Seeds redemption by type and year	11
2:	National: Breeder seed production by source, 2013 (Kg)	12
3:	National: Foundation seed production by type and year (MT)	12
4:	WAAPP: Seed production initiative by source, 2013	13
5:	YIIFSWA: Breeder seed yam distribution and performance, 2013	13
6:	List of maize varietal types by source	15
7:	Mean values for maize yield parameters	15
8:	National: Seed crop field inspection by type and class, 2013 (Ha)	17
9:	National: Seed crop field inspection by type and source, 2013 (Ha)	17
10:	Submitted seed samples testing and evaluation by type (nos)	18
11:	Crop varieties released and registered, 2013	19
12:	NASC-CBSP: Certified seed production by type, 2013 (MT)	20
13:	National: Seed crop production by type and class, 2013 (MT)	23
14:	National: Seed crop field inspection by type and class, 2013 (Ha)	24
15:	National: Certified seed production by type and year (MT)	24
16:	National: Certified seed production summary by source and year	24
17:	National: Certified seed production by source and type	25
18:	Companies: Certified seed production by type and year (MT)	29
19:	CBOs: Certified seed production by type and year	29
20:	CBOs: Certified seed production by type and source, 2013 (MT)	30
21:	Certified seed prices by type and year	30
22:	Capacity Building list, 2013	32
23:	Staff Re-Deployment list, 2013	34
24:	Staff Retirement list, 2013	35

Figure	List of Figures	Page
1:	Organogram of National Agricultural Seeds Council	10
2:	Seed crop field inspection assessment (BS, FS &CS), 2013 (Ha)	17
3:	National: Certified seed production by source and year (MT)	26
4:	National: Maize certified seed production by type and year (MT)	26
5:	National: Rice certified seed production by type and year (MT)	27
6:	National: Sorghum certified seed production by year (MT)	27
7:	National: Certified cotton seed production by year (MT)	28
8:	Companies: Certified seed production share, 2013 (MT)	29

FORWARD/STATEMENT BY THE Ag. DIRECTOR GENERAL

It gives me honour and satisfaction to present the sixth Annual Report since the establishment of the National Agricultural Seed Council. The report covers the activities of the Council during the year under review geared towards the attainment of the seed requirement for farmers in Nigeria, with emphasis on Federal Government's Agricultural Transformation Agenda (ATA).

The Council continued to play its major role in seed production, coordination, certification, and promotion of the seed industry in collaboration with the National Agricultural Research Institutes (NARIs), the International Agricultural Research Centres (IARCs), the private seed companies and other stakeholders. These efforts resulted in an increase in Certified Seed (CS) production by the seed producers from **44,487 MT** in 2012 to **149,844 MT** in 2013 showing an increase of **237** per cent.

The quality assurance for these seeds was provided by the Council's seed certification and quality control officials through seed field inspection, seed sampling and testing of seeds that were produced from 75,653 Ha of seed crop fields.

The Council during the year under review facilitated 45 seed companies to access loans of about **₦4.2 billion** loans for seed buy back. About 59,337 MT of certified seed supplied by the seed companies was redeemed by about 3.2 million farmers amounting to **₦ 10,378,218,400** under the GES scheme in 2013 representing 143% increase compared to 24,329 MT redeemed by 1.2 million farmers in 2012.

To facilitate the establishment of more seed enterprises in the country, facilities of 73 prospective seed entrepreneurs out of 120 applications received were inspected

The Inception and launch of the Food and Agriculture Organisation (FAO) Technical Cooperation Project aimed at strengthening the national seed systems in Nigeria was organised for stakeholders in the seed industry

The Council acknowledges the support of the Honourable Minister of Agriculture, Dr. Akinwunmi Ayodeji Adesina in provision of both human and material resources to enhance seed certification and quality control activities of the Council.

A.O. Olatokun
Ag. Director General

EXECUTIVE SUMMARY

This report provides an overview of the activities of the National Agricultural Seeds Council (NASC) in the year 2013 as presented through the implementation of the activities of the various Departments, Sections, and Units of the Council. Highlights of the report are as follows:

NASC OPERATIONS

A total of 75,653 Ha of seed crops-Breeder Seed (BS), Foundation Seed (FS) and Certified Seed (CS) fields was inspected of which 75,126 Ha was approved for certification. This was achieved through regular seed field inspection visits by the Council certification officers; Headquarter monitoring team visits for spot-checking the total area under seed production. Also, a source of origin inspection to Poverty Alleviation Experimental Farm, Togo was jointly carried out by a team of NASC, Africa Rice Center, Rice Value Chain, and National Agricultural Quarantine Services (NAQS) Scientists;

The NASC facilitated 45 seed companies to access about ~~N~~4.2 billion loan in 2013 compared to ~~N~~1.895 billion in 2012 for seed buy back from their outgrowers. As a result 59,337 MT of certified seed was redeemed by about 3.2 million farmers amounting to ~~N~~ 10,378,218,400 under the GES scheme in 2013 representing 144% increase compared to 24,329 MT redeemed by 1.2 million farmers in 2012.;

A total of 105 seed entrepreneurs (86 companies, 5 NARIs /IARCs and 14 CBOs) participated in production of seeds during the year compared to 57 in 2012

A total of 1,659 seed samples s were tested and evaluated for physical purity, germination and other quality attributes in the Central Seed Testing Laboratory, Sheda and the six zonal laboratories during the year,

Also, a total of 2,585,000 certification tags made up of 1,600 for BS, 8,000 for FS and 2,575,400 for CS were sold to seed producers nationwide ;

Facilities of 73 out of the 120 seed entrepreneurs that applied for accreditation were inspected

The National Committee on Naming, Registration, and Release of Crop Varieties, Livestock Breeds and Fisheries approved for registration and release of 14 crop varieties. Significantly, IAR, Zaria and a multinational DuPONT Pioneer released and registered 2 hybrid sorghum varieties: PD86W 15 and PD87W 16 for commercialization in the country.

In order to encourage the growth and development of community seed producers and ensure the diffusion and use of high quality improved seeds by farmers in the rural communities in order to minimise the use of 'saved seeds' by farmers, the Council established six community seed plots nationwide. A total of

8.40 MT of certified seed were harvested and processed for lateral spread to farmers in the catchment areas;

The Council in collaboration with seven (7) seed companies established thirteen (13) Maize hybrid/OPVs highway demonstration plots of 0.25 Ha each in twelve States nationwide to demonstrate the superiority of high quality improved crop varieties over the local ones and allow farmers choose the best varieties that suit their socio- economic needs;

The Council signed a sub-agreement with the International Institute for Tropical Agriculture (IITA), Ibadan during the year for implementation of IITA Yam Improvement for Income and Food Security in West Africa (YIIFSWA) Project to ensure the production of foundation seed yam for certified seed production. Eighty (80) mini-tubers each of six (6) varieties of breeder seed of yam received from the National Root Crops Research Institute (NRCRI) were distributed to the two participating seed companies for multiplication into FS;

The total staff strength of the Council in the year was 322 made up of 263 senior and 59 junior staff respectively.

The Internally Generated Revenue during the year was ~~₦~~212,721,000.00 (Two Hundred Million, Seven Hundred and Twenty One Thousand Naira) compared to the sum of ~~₦~~29,335,983.00 generated in 2012.

1.0 INTRODUCTION

The National Agricultural Seeds Council (NASC) was established in December, 2007 as an Agency of the Federal Ministry of Agriculture and Rural Development in line with the provisions of National Agricultural Seeds Act No. 72 of 1992.

The NASC is charged with the overall development and regulation of the national seed industry. The functions of the Council include:

- Analyse and formulate programmes, policies and actions regarding seed development and the seed industry in general, including research on issues relating to seed testing, registration, release, production, marketing, distribution, certification, quality control, supply and use of seeds in Nigeria, importation and exportation of seeds.
- Design improved management systems and procedures relating to the administration of seed activity.
- Advise the Federal Government on the organization, management and financing of seed programmes.
- Analyse the market and prices of seeds.
- Advise the national research system on the changing pattern of seed demand and farmers' needs.
- Monitor and evaluate the achievements of the national seed system and recommend improvement.
- Encourage the establishment in Nigeria of seed companies for the purpose of carrying out research, production, processing and marketing of seeds; and
- Regulate the Seed Industry in Nigeria.

2.0 ORGANISATION AND MANAGEMENT

The organizational structure of the Council as shown in figure 1 was maintained during the year. However, the Governing Board of the Council dissolved in 2011 by the Federal Government was yet to be constituted.

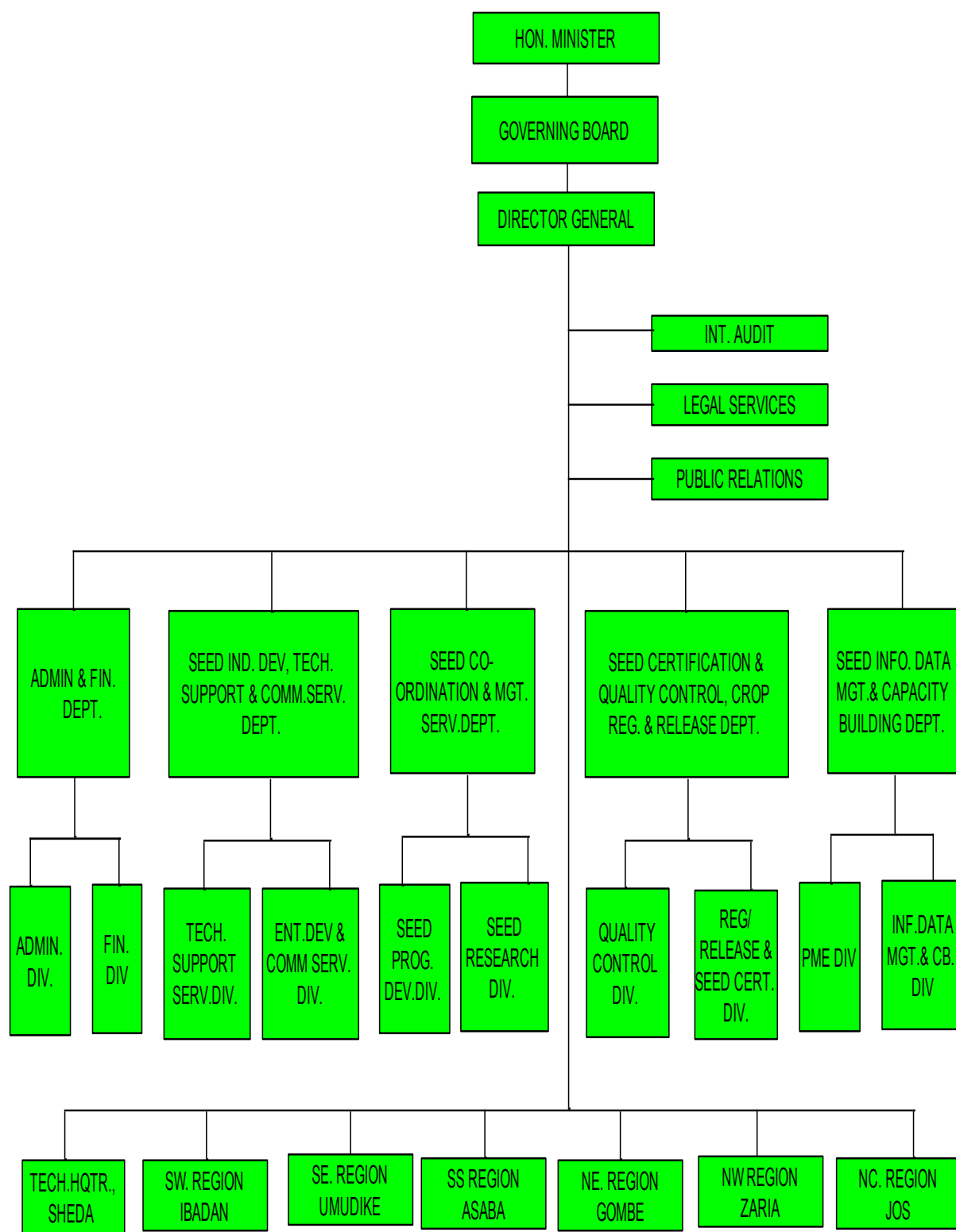


Figure 1: Organogram of National Agricultural Seeds Council

2.1.0 THE SEED CO-ORDINATION AND MANAGEMENT SERVICES DEPARTMENT (SCMSD)

The Seed Coordination and Management Services (SCMS) Department has the responsibility for coordinating national seed production networks such that improved seeds are made available to farmers to increase productivity and enhance their standards of living. The function of the department involves seeds research and coordination. This is done with stakeholders' participation towards achieving the national requirements for all classes of seeds and seedlings recognized in the national seed system i.e. Breeder, Foundation and Certified seeds

2.1.1 ATA: Growth Enhancement Support Scheme (GES) - Seeds

The NASC during the year coordinated the seed requirement for the Agricultural Transformation Agenda of the Federal Government of Nigeria and other related programmes. Under the Growth Enhancement Support Scheme (GES), the NASC facilitated 45 seed companies to access about ~~₦~~4.2 billion loans for seed buy-back from their outgrowers in 2013 compared to ~~₦~~1.895 billion in 2012. As a result, 59,337 MT of certified seed amounting to ~~₦~~ 10,378,218,400 was redeemed by about 3.2 million farmers under the GES scheme in 2013 representing 144% increase compared to 24,329 MT redeemed by 1.2 million farmers in 2012. The quantity and value of seeds redeemed are shown in the table below

Table 1: ATA-GES seeds redemption by type and year

S/N	Seed Type	2012		2013	
		Quantity (MT)	Value (₦)	Quantity (MT)	Value (₦)
1.1	Maize Hybrid	1,814	399,097,600		
1.2	Maize OPVs	1,721	309,744,000		
1.3	Maize Total*	3,535	708,841,600	15,489	3,097,722,000
2	Rice**	18,776	4,415,251,250	39,044	6,568,060,000
3	Sorghum	504	90,720,000	386	84,832,000
4	Soybean			1,217	243,410,000
5	Cotton	1,513	181,611,600	3,202	384,194,400
	Total	24,329	5,396,424,450	59,337	10,378,218,400

Source: NASC

- * 2013 maize quantity 15,489 MT =15,489MT wet season + 72MTdry season
- **2013 rice quantity 39,044 MT= 26,272 MT wet season and 12,772 dry season
- Subsidy price for 2013: ₦200 per Kg for maize; rice ₦ 250/Kg; sorghum ~~₦~~ 220; soybean ₦ 200; and cotton ₦ 120
- * While In 2012, rice total: quantity (value): Regular GES- 5, 76.20 MT (1,115,240 naira); and Flood Recovery and Accelerated paddy production: 13,200.05 MT (3,300,011,250 naira) and maize total: quantity (value): 3,534.88 MT (708,841,600 naira)

2.1.2 Breeder (BS) and Foundation (FS) seed production

The Council coordinated the production of the two classes of seeds to ensure availability and genetic purity of parental materials required for certified seed multiplication. The quantity of breeder and foundation seed of various crops produced in 2013 for the national programmes is as shown in Tables

Table 2: National: Breeder seed production by source, 2013 (Kg)

S/N	NARIs Name	Maize	Rice	Millet	Cowpea	Soybean	Total
1	Africa Rice		7,770				7,770
2	IAR	122,150					122,150
3	IAR&T	176,500			9,600		186,100
4	LCRI			450			450
5	NCRI		107,100			10,335	117,435
	Total	298,650	114,870	450	9,600	10,335	433,905

Source: NASC

Table 3: National: Foundation seed production by type and year (MT)

S/N	Seed crop	2010	2011	2012	2013
1	Maize	96	213	680	1,117
2	Rice	328	229	298	1,388
3	Sorghum	10	25	16	74
4	Millet	10	8	9	31
5	Cowpea	27	42	34	26
6	Soybean	8	2	47	3,276
7	Groundnut	23	38	19	29
8	Cotton	7	25	18	2,655
9	Sesame	2	4		-
	Total	511	588	1,121	8,595

Source: NASC

2.1.3 West African Agricultural Productivity Programme (WAAPP) seed distribution initiative

WAAPP is a World Bank Funded programme set up to increase agricultural productivity in Africa. The WAAPP Seed programme is an intervention set up to try bridging the gap in agricultural Seeds supply. In 2013 WAAPP contracted mandate Research Institute to produce Breeder and Foundation Seeds of Rice, Maize and Sorghum for distribution to **Seed Companies at 40% price Support**. The Council coordinated the distribution of these seeds to the various seed companies. Below is the summary of seeds distributed under the WAAPP Seed intervention programme.

Table 4: WAAPP seed production initiative by source, 2013

S/N	Seed Crop	Seed Class	NARIs name	Quantity Delivered (Kg)
1	Rice	BS	NCRI	6,350
2	Rice	FS	NCRI	4,000
3	Maize	BS	IAR	3,065
4	Maize	FS	IAR	12,277
5	Maize	BS	IAR & T	1,200
6	Maize	FS	IAR & T	22,900
7	Sorghum	FS	IAR	1,500
Total				51,292

2.1.4 Collaboration with IITA Yam Improvement for Income and Food Security in West Africa (YIIFSWA) Project

The Council signed a sub-agreement with the International Institute for Tropical Agriculture (IITA), Ibadan in February 2013 to among other objectives:

- ensure the production of foundation seed of yam for certified seed production;
- assist in identification and selection of seed yam growers in major key project locations in Nigeria;
- lead in the training of seed yam growers in quality declared seed yam (QDSY) production and marketing;
- certify and register high quality seed yam producers in Nigeria;

Also, facilitate and assure the certification of breeder, foundation and certified (commercial) seed yam produced by NARIs, National Organizations, private seed yam producers and seed entrepreneurs

The project activities carried out during the year are highlighted as follows:

- Participation in YIIFSWA Nigeria Planning Meeting held at IITA, Ibadan;
- Participation in the YIIFSWA progress monitoring workshop held in Ghana;
- Distribution of 80 mini-tubers of breeder seed each of six (6) yam varieties received from the National Root Crop Research Institute (NRCRI) to the two participating seed companies as shown in the table below:

Table 5: YIIFSWA: Breeder seed yam distribution and performance, 2013

S/N	Company name	Variety	Mini-Tubers distributed (No)	Yield (Kg)	Yield (Nos. of Mini-Tubers)
1.	Green-Gold Ltd	TDr 89/02677	80	35	213
2		TDr 89/02565	80	40	199
3		TDr 89/02665	80	26	245
4	Romarey	TDr 89/02660	80	24	128
5	Ventures	TDr 89/02461	80	23	80
6		TDr 89/02475	80	11	50

- Training of Out-growers/ farmers on mini-sett technique of seed yam multiplication was held in July with 30 participants drawn from seed companies, seed yam farmers and NASC staff were trained on the principles and practice of seed yam production by mini-sett technique, and the quality assurance processes in seed yam production at the NASC, Technical headquarter, Sheda-FCT

Other seed coordination related activities undertaken include:

- Participation in the West African Seed Project (WASP) Annual Planning and Review Meeting/Workshop held in Senegal;
- The West Africa Agricultural Productivity Programme (WAAPP)-Task Force Meeting held in Abuja that prepared Seed Multiplication Strategy for the WAAPP-Nigeria Project;
- Federal Ministry of Agriculture and Rural Development and the Kogi State Stakeholders forum on dry season paddy rice production/ flood recovery programme held at Lokoja; and
- The National Rice Development Strategy (NRDS) Task Force Meeting aimed at reviewing the Concept notes prepared in 2012 held at Abuja



Participants in a group photograph with NASC Ag.DG, and Directors at YIIFSWA training workshop on seed yam foundation multiplication held at NASC, Sheda-Kwali, FCT



MSHR/IITA, Dr. S. Adamu, giving a brief on YIIFSWA Project



YIIFSWA Team field visit to established foundation seed yam fields at Kwali, FCT



Dr S.E. Abimiku, Director, NASC on seed field inspection

2.1.5 Seed Research

The comparison trial of the yield potential of hybrids and open pollinated maize varieties (*Zea mays* L.)

The trial was conducted in IAR, Zaria research field in the North Western Region of Nigeria- N11°11.180'E7°36.876. The planting was done on a gross plot each of 40m² (8m x 5m) with 0.75m within plots and 1m between blocks as buffer zone was used for the experiment. Six (6) maize varieties were used for the experiment

Table 6: List of maize varietal types by source

S/NO	Crop	Variety	Source	Hyb./OPV.
1	Maize	NG-Samaru	Nagari seeds	Hyb.
2	Maize	Jo-195	Da-Allgreen	Hyb.
3	Maize	SDM 1	Maslaha	Hyb.
4	Maize	MR-White	Manoma	Hyb.
5	Maize	Sammaz 14	IAR	OPV.
6	Maize	Sammaz 34	IAR	OPV.

The experiment was laid on a Complete Randomized Block Design (CRBD). The treatment was replicated four times. The plant spacing of 25cmx75cm (53,333 plants/ha) was adopted. Recommended agronomical practices were adhered to and data collected were analysed using SAS software. See tables below

Table 7: Mean values for maize yield parameters

Parameters	TRT A NG- SAMARU	TRT B JO-195	TRT C SDM 1	TRT D MR.WHI TE	TRT E SAMMAZ 14	TRT F SAMMAZ 34	SE
Plant height @ harvest (cm)	251.43 ^a	238.87 ^d	248.28 ^b	232.87 ^e	240.27 ^c	217.63 ^f	2.34
No of cob/plant	1.00	1.00	1.00	1.00	1.00	1.00	0.00
Cob weight/plant (cm)	177.83 ^b	142.84 ^d	201.18 ^a	159.58 ^c	183.64 ^b	157.88 ^c	6.17
Seed weight/plant (g)	129.75 ^c	109.79 ^e	148.76 ^a	114.72 ^d	141.83 ^b	118.82 ^d	4.88
Cob length (cm)	17.08 ^a	15.58 ^d	16.48 ^{bc}	16.58 ^{bc}	15.59 ^d	16.70 ^b	0.33
Hundred seed weight (g)	27.06 ^a	23.21 ^c	27.81 ^a	25.32 ^b	27.85 ^a	23.89 ^c	1.17
Threshing percentage (%)	72.81 ^d	77.24 ^a	73.93 ^c	71.01 ^e	77.06 ^a	75.34 ^b	1.14
Yield (Kg/Ha)	2586.70 ^d	2848.50 ^c	4490.90 ^a	3366.50 ^b	3315.90 ^b	3035.10 ^c	246.90

Means within row with different *superscripts* differ significantly (P<0.05)

It can be concluded that the hybrid maize- SDM 1 (4,490 kg/ha) from Maslaha out yielded the other hybrids and OPVs varietie from I.A.R. Also, hybrid maize –MR-White from Manoma was at par with an open pollinated maize variety-SAMMAZ 14 from I.A.R. While hybrid maize- NG-Samaru from Nagari seeds- perform least (2,586.7Kg/ha)

However, is hereby recommended that the trial needs to be replicated in more sites for minimum two consecutive years nationwide

2.2.0 SEED CERTIFICATION, QUALITY CONTROL, CROP REGISTRATION AND RELEASE DEPARTMENT (SCQCCR&RD)

The Department has statutory responsibility for seed quality assurances and certification of breeder, foundation and certified seeds; effective quality control of all classes of traded seeds; and facilitation of prompt registration and release of newly developed crop seed cultivars. The Department is also responsible for seed law enforcement and control of activities of spurious seed dealers to ensure that farmers are offered genuine quality seeds for profitable farming and food security.

In order to carry out these activities effectively, Seed Certification Officers are located in each State of the Federation including the FCT. In addition, seed testing laboratories exist in the six zonal offices for testing the quality of seed lots intended for sale to farmers. All these have been re-aligned to key into the present administration's Agricultural Transformation Agenda.

2.2.1 Field Inspection

During the year, a total of 75,653 Ha of seed crops-(BS, FS &CS) fields was inspected of which 75,126 Ha was approved for certification, while 527 Ha failed the minimum field standards. This was achieved through three minimum seed field inspection visits by the Council's certification officers; headquarter monitoring team visits for spot-checking at least 10 % of the total area under seed production. In addition to spot-checking the established seed fields, a joint monitoring and verification of source of planting materials was carried out nationwide. Moreover, a source of origin inspection to Poverty Alleviation Experimental Farm, Togo was jointly carried out by a team of NASC; Africa Rice Center, Rice Value Chain and NAQS (See table 8, 9 and figure 2)



A joint team of NASC, Africa Rice Center, Rice Value Chain and NAQS Scientist on seed field inspection visit to Poverty Alleviation Experimental Farm, Togo

Table 8: National: Seed crop field inspection by type and class, 2013 (Ha)

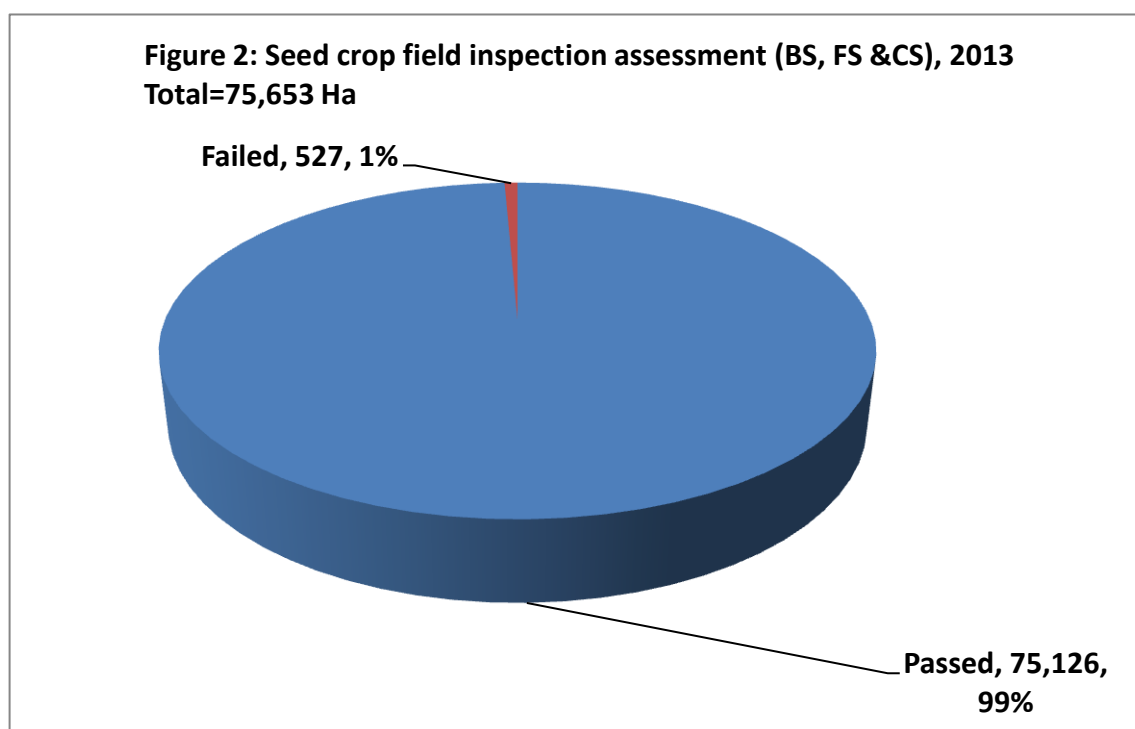
S/N	Seed Crop	Breeder	Foundation	Certified	Total
1	Maize	114	475	24,664	25,253
2	Rice	38	444	24,415	24,897
3	Sorghum		43	935	978
4	Millet	0.3	29	88	117
5	Cowpea	8	23	47	78
6	Soybean	7	2,182	2,192	4,381
7	Groundnut		14	35	49
8	Cotton		3,318	16,507	19,825
9	Sesame			75	75
	Total	167	6,528	68,957	75,653

Source: NASC

Table 9: National: Seed crop field inspection by type and source, 2013 (Ha)

S/N	Source	Maize	Rice	Sorghum	Millet	Cowpea	Soybean	Groundnut	Cotton	Sesame	Total
1	Companies	23,998	24,312	957	49	12	2,183	27	19,813		71,352
2	CBOs	886	452	4	62	37	66	8		75	1,591
3	NARIs	369	132	17	6	29	2,131	14	12		2,710
	Total	25,253	24,897	978	117	78	4,381	49	19,825	75	75,653

Source: NASC



Seed crop: Maize, Rice, Maize, Millet, Sorghum, Cotton, Groundnut, Cowpea and Sesame

Source: NASC

2.2.2 Seed Sampling and Testing

To ensure that seeds made available to farmers by seed producers are of the highest quality and guarantee increased crop productivity, a total of 1,659 seed samples submitted for nine seed crops were tested and evaluated for minimum seed standards in the Central Seed Testing Laboratory (CSTL), Sheda and six zonal laboratories nationwide. 1,390 samples (84%) met the minimum seed standard, while 269 (16%) samples failed to meet up with the minimum seed standards.

Table 10: Submitted seed samples testing and evaluation by type (no)

s/n	Seed crop	Submitted sample	Passed lot	Failed lot
1	Maize	710	641	69
2	Rice	638	539	99
3	Sorghum	31	30	1
4	Millet	11	8	3
5	Cowpea	17	14	3
6	Soybean	80	48	32
7	Groundnut	11	8	3
8	Cotton	157	98	59
9	Sunflower	4	4	-
	Total	1,659	1,390	269

Source: NASC

2.2.3 Sale of Certification Tags

During the year, a total of 2,585,000 certification tags made up of 1,600 for BS, 8,000 for FS and 2,575,400 for CS were sold to seed producers

2.2.4 Accreditation of Seed Entrepreneurs

In the year, a total of One hundred and twenty (120) applications were received from prospective seed entrepreneurs. Facilities inspection was undertaken to seventy-three (73) sites. The reports of the assessment and recommendations have been forwarded to the Council In-house Committee for approval.

2.2.5 Capacity Building for NASC Quality Control Officers

An interactive meeting was organized by the Council for the Quality Control Officials in May 2013 at the Central Seed Testing Laboratory Sheda, Abuja to strengthen the capacities for enhanced service delivery. A total of 75 participants attended.

2.2.6 Varietal Registration and Release

During the year, the National Committee on Naming, Registration, and Release of Crop Varieties, Livestock Breeds and Fisheries approved for registration and release 14 crop varieties. Significantly, IAR, ABU, Zaria and DuPONT Pioneer released and registered hybrid sorghum varieties: PD86W 15 and PD87W 16 for commercialization. Details are shown in the table below.

Table 11: Crop varieties released and registered, 2013

S/NO	Crop	Variety	Nominating Institute	Month of Release
1	Rice	UPIA 1	University of Port – Harcourt and NCRI (Badeggi)	June
2		UPIA 2		June
3		UPIA 3		June
4	Maize	SAMMAZ 40	IAR	December
5		SAMMAZ-38	IAR	June
6		SAMMAZ 39	IAR	June
7		IFE-MAIZE HYB-5	IAR&T, Ibadan	June
8		IFE MAIZE HYB-8	IAR&T, Ibadan	June
9	Sorghum	PD86W 15	IAR, (ABU, Zaria and	June
10		PD87W 16	DuPONT PIONEER	June
11	Groundnut	SAMNUT 25	IAR, ABU, Zaria and	December
12		SAMNUT 26	ICRISAT	December
13	Pearl Millet	LCICMV-4	LCRI	December
14	Sweet Potato	UMUSPO-3	NCRI, Umudike	June

Source: NASC

2.2.7 Out- Break of Maize Streak Virus Disease (MSV) in the fields of Ekiti and Osun States.

Following reported case of MSV outbreak in the maize fields in Ekiti and Osun States in 2013, a joint team of scientist from the Council and IAR&T visited affected states to ascertain the level of disease incidence. Findings revealed that over 60% of the maize fields in these states were infected. The MSV incidence score ranged from medium to high. Not less than 200 farmers lost their maize to this disease. The outbreak was attributed to deployment of specific varieties to wrong ecology; poor timing of planting and inefficient agronomic practices among others. It was also suggested that the outbreak might be a result of emergence of a new strain of MSV.

2.2.8 Field Inspectorate Services Vehicle Capacity Strengthening.

In order to strengthen the capacity of the Council to cope with the challenges associated with increased certification activities for seed under the ATA, the Honorable Minister of Agriculture and Rural Development approved the procurement of 37 field inspection vehicles for the Council. Vehicles for distribution based on the approval. However, only 20 no was released by the Ministry leaving a balance of 17 yet to be handed over to the Council. The vehicles were distributed to the field officers nationwide based on assessed workload.

2.3.0 THE SEED INDUSTRY DEVELOPMENT, TECHNICAL SUPPORT AND COMMERCIAL SERVICES DEPARTMENT (SITSCS)

The SITSCS is responsible for the development and promotion of a viable seed industry with greater private sector participation through the under listed activities:

2.3.1 Development of Small/Medium Scale Seed Enterprise

Three (3) nos small scale seed entrepreneurs identified and registered as small scale seed producers: Akon & Associates Nig. Ltd; Itopaoiza Farms Nig. Ltd in Wushishi Niger State, and Lumiere Ltd Gboko, Benue State

2.3.2 Community Seed Development Programmes

The Council established six community seed production plots-0.5ha each nationwide during the year. The scheme is aimed at encouraging the growth and development of community seed producers and ensuring the diffusion and use of high quality improved seeds by farmers in the rural communities in order to minimise the use of 'saved seeds' by farmers. A total of 8.40 MT of certified seed were harvested and processed for lateral spread to farmers in the catchment areas (see table 12)

Table 12: NASC-CBSP: Certified seed production by type, 2013 (MT)

S/N	Zone	State	LGA	Community	Seed Type	Variety	Area (Ha)	Production (MT)
1	South West	Ogun	Obafemi Owode	Ajegunle	Rice-Lowland	FARO-44	0.5	1.75
2	South East	Ebonyi	Abakaliki	Abakaliki	Rice-Lowland	FARO-44(SIPPI)	0.5	1.0
3	South South	Edo	Esan	Asuwa Irrua	Rice-Lowland	FARO-44(SIPI)	0.5	1.0
4	North West	Jigawa	Dutse	Dutse	Rice-Upland	FARO-55(NERICA-1)	0.5	1.5
5	North East	Adamawa	Mayo Belwa	Fufure	Rice-Lowland	FARO-44(SIPPI)	0.5	1.5
6	North Central	Niger	Minna	Minna	Rice-Lowland	FARO-44(SIPPI)	0.5	1.65
Total							3.0	8.40

2.3.3. High Way Demonstration Programmes /PIDOM and other Crop Varieties Trial

During the year, thirteen (13) demonstration sites were established in 12 States nationwide on 0.25 ha each. The objective was to demonstrate the superiority of hybrid maize over open pollinated maize varieties as well as the superiority of improved best varieties of other crops over the local ones so as to enable farmers choose the varieties that suit their socio-economic needs. Thirteen seed companies nominated ten maize hybrid varieties for comparison with seven OPVs. The incidence of maize stemborer was recorded in the south west probably due to late planting time and drought. Also, isolated infection of maize streak virus was recorded on the field. In the North Western states trial sites: Kano and Zaria rain cessation during cob formation resulted in poor performance.

2.3.4. Field Days

During the year under review, field days were conducted for stakeholders in the demonstration sites at the NASC Technical Headquarters, Sheda-Kwali, FCT on the 19th of November, 2013; Idi-Omo, Oyo State on the 21st of November, 2013; and Kwami, Gombe State on the 22nd October. About 350 stakeholders comprising Farmers, Agricultural Programme (ADP) Extension staff, Seed Companies, Royal Fathers, Community Based Organizations, and Rice Farmers Association of Nigeria (RIFAN) among others were in attendance. The programme was covered by National Television Authority (NTA), Abeokuta for the South West Zone and the News Agency of Nigeria (NAN), Federal Radio Corporation of Nigeria (FRCN), and NTA 5, Abuja for the Sheda-Kwali location. Majority of the farmers present at the field day and neighboring farmers adjudged the superiority of hybrids and improved OPVs performance over the local check varieties.



Stakeholders in attendance during field day held in NASC, Sheda-Kwali, FCT

2.3.5 Syngenta Seed Company: Rice and Sorghum Demonstration/Trial and Field Day.

The Council participated during the Syngenta rice and sorghum demonstration field day organized for stakeholders at Badeggi, Niger State, and IAR-ABU, Zaria, Kaduna State. Five hybrid rice varieties, Syngenta 1,2,3,4 and 5 introduced by Syngenta undergoing evaluation comparison with local checks varieties: FARO44, 52, 57, 60 and 61 were nominated. Syngenta rice varieties 1, 2, and 3 outperformed the checks varieties. Parameters considered would further undergo on- farm trial while data generated would be recommended to the National Variety Release and Registration Committee for approval consideration.

2.4.0 SEED INFORMATION, DATA MANAGEMENT AND CAPACITY BUILDING DEPARTMENT (SIDM&CB)

The Department is responsible for Programme Development and Planning; Monitoring and Evaluation of national seed programme and Council's Projects; Integrated Management Information system and Data Bank for the seed sub-sector; Provision of Information Communication Technology Support; National & International Collaboration /Linkage; Library & Documentation; Capacity Building, among others.

2.4.1 National Seed System Survey

The Annual National Seed System Survey was carried out during the year to provide national seed data series for the three traded seed classes (BS, FS and CS), and help policy makers come up with decisions that can make the seed industry more effective, efficient and contribute towards fulfilling ATA goals.

Major Findings

The seed industry witnessed a great increase in the production of all classes of seeds as well as the number of seed enterprises established during the year. The production of certified seeds rose from **44,487 MT** in 2012 to **149,844 MT** in 2013 showing an increase of **237** percent. Similarly, foundation seed production increased from **1,121 MT** in 2012 to **8,595 MT** during the year. A total of 105 seed entrepreneurs (86 companies, 5 NARIs /IARCs and 14 CBOs) participated in production of seeds during the year compared to 57 recorded in year 2012. The upward trend is attributable to the favourable government policies on GES which has encouraged increased seed production by the various seed producers. The contribution of the following states was very much significant: Kano, Katsina, Kaduna, Kebbi, Jigawa, Borno, Niger, Plateau, Osun, and Benue. The annual trend from 2007 to date is as shown in the table below

Table 13: National: Seed crop production by type and class, 2013 (MT)

S/N	Seed Crop	Breeder	Foundation	Certified	Total
1	Maize	299	1,117	58,128	59,544
2	Rice	115	1,388	73,585	75,088
3	Sorghum		74	1,388	1,462
4	Millet	1	31	98	129
5	Cowpea	10	26	50	85
6	Soybean	10	3,276	3,278	6,564
7	Groundnut		29	69	98
8	Cotton		2,655	13,189	15,843
9	Sesame			60	60
	Total	434	8,595	149,844	158,873

Source: NASC

Table 14: National: Seed crop field inspection by type and class, 2013 (Ha)

S/N	Seed Crop	Breeder	Foundation	Certified	Total
1	Maize	114	475	24,664	25,253
2	Rice	38	444	24,415	24,897
3	Sorghum		43	935	978
4	Millet	0.3	29	88	117
5	Cowpea	8	23	47	78
6	Soybean	7	2,182	2,192	4,381
7	Groundnut		14	35	49
8	Cotton		3,318	16,507	19,825
9	Sesame			75	75
	Total	167	6,528	68,957	75,653

Source: NASC

Table 15: National: Certified seed production by type and year (MT)

s/n	Seed crop	2007	2008	2009	2010	2011	2012	2013	% change 2012-2013
1.1	Maize-Hybrid	1,137	2,641	3,150	1,607	1,947	3,335	4,636	39
1.2	Maize-OPVs	2,186	4,567	1,782	1,803	3,367	10,916	53,492	390
1.3	Maize Total	3,323	7,208	4,931	3,409	5,313	14,251	58,128	308
2.1	Rice-Lowland	4,426	6,284	813	1,836	6,321	18,040	72,879	304
2.2	Rice-Upland	1,117	2,031	371	320	509	810	707	-13
2.3	Rice-Total	5,543	8,315	1,184	2,155	6,830	18,850	73,585	290
3.1	Sorghum-OPVs	199	2,366	509	250	327	644	1,360	111
3.2	Sorghum-Hybrid	-	-	-	-	-	-	28	-
3.3	Sorghum Total	199	2,366	509	250	327	644	1,388	116
4	Millet	161	1,002	939	152	148	171	98	-43
5	Wheat	70	250	92.69	-	-	-	-	-
6	Cowpea	154	1,078	114	153	67	88	50	-43
7	Soybean	415	546	240	151	329	1,081	3,278	203
8	Groundnut	144	404	73	62	15	60	69	15
9	Cotton	94	301	15	70	1,751	9,333	13,189	41
10	Sesame	19	245	3	6	8	10	60	500
	Total	10,122	21,715	8,101	6,409	14,788	44,488	149,844	237

Source: NASC

Table 16: National: Certified seed production summary by source and year

year	2008		2009		2010		2011		2012		2013	
Source	Area sown (ha)	product ion (mt)	Area sown (ha)	produc tion (mt)	Area sown (ha)	produc tion (mt)	Area sown (ha)	producti on (mt)	Area sown (ha)	producti on (mt)	Area sown (ha)	producti on (mt)
Companies	6,646	8,295	5,394	7,058	2,796	4,309	9,046	12,549	21,499	42,278	67,489	146,008
CBOs	9,305	13,450	759	951	1,456	2,100	1,202	2,239	976	2,209	1,469	3,836
Total	15,95	21,745	6,153	8,009	4,252	6,409	10,248	14,788	22,476	44,487	68,957	149,844

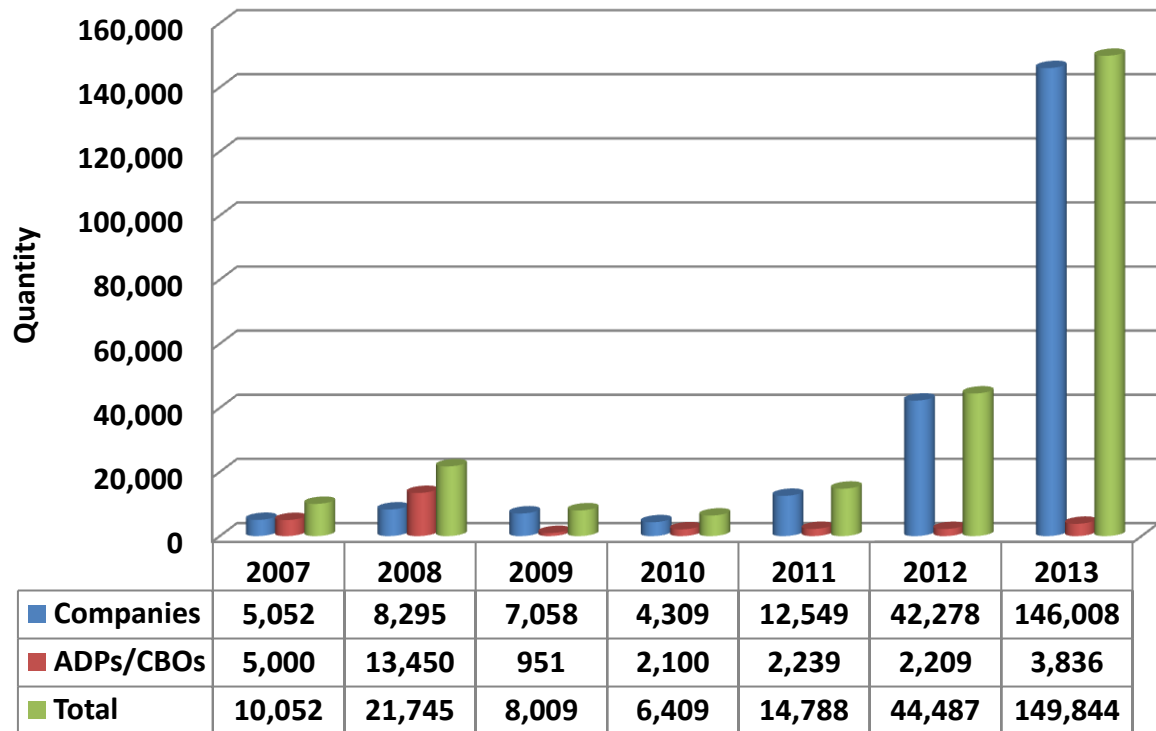
Seed crops: maize, rice, sorghum, millet, cowpea, soybean, groundnut, cotton & sesame

Table 17: National: Certified seed production by source and type

		2008		2009		2010		2011		2012		2013	
seed type	source	Area sown (ha)	production (mt)	Area sown (ha)	production (mt)	Area sown (ha)	production (mt)	Area sown (ha)	production (mt)	Area sown (ha)	production (mt)	Area sown (ha)	production (mt)
Maize	Companies	2,962	3,771	3,217	4,579	1,691	2,476	3,236	4,616	6,006	13,671	23,857	55,791
	CBOs/ADPs	2,026	3,467	196	309	583	933	422	698	221	580	807	2,338
	Total	4,988	7,238	3,413	4,888	2,274	3,409	3,658	5,313	6,227	14,251	24,664	58,128
Rice	Companies	793	1,806	770	936	703	1,403	1,818	5,641	5,011	17,641	23,976	72,323
	CBOs/ADPs	3,135	6,509	206	200	383	752	418	1,189	365	1,209	440	1,262
	Total	3,928	8,315	976	1,136	1,086	2,155	2,236	6,830	5,376	18,850	24,415	73,585
Sorghum	Companies	2,248	2,186	492	492	161	209	260	260	295	626	931	1,380
	CBOs/ADPs	384	180	17	17	32	36	67	67	12	18	4	8
	Total	2,632	2,366	509	509	193	245	327	327	307	644	935	1,388
Millet	Companies	352	295	636	764	24	21	41	41	92	74	27	37
	CBOs/ADPs	1,033	707	146	175	145	136	107	107	122	98	61	61
	Total	1,385	1,002	782	939	169	157	148	148	214	171	88	98
Wheat	Companies	-	-	-	-	-	-	-	-	-	-	-	-
	CBOs/ADPs	100	250	40	93	-	-	-	-	-	-	-	-
	Total	100	250	40	93	-	-	-	-	-	-	-	-
Cowpea	Companies	110	84	49	49	45	49	16	19	22	26	12	13
	CBOs/ADPs	1,012	995	65	65	94	104	38	48	51	62	35	36
	Total	1,122	1,078	114	114	139	153	54	67	73	88	47	50
Soybean	Companies	143	129	191	191	120	120	219	241	807	969	2,153	3,278
	CBOs/ADPs	267	417	49	49	31	31	75	88	93	112	38	56
	Total	410	546	240	240	151	151	294	329	901	1,081	2,192	3,278
Groundnut	Companies	17	12	40	48	10	11	9	10	26	33	27	54
	CBOs/ADPs	413	392	22	26	46	51	5	5	17	26	8	15
	Total	430	404	61	73	56	62	14	15	42	60	35	69
Cotton	Companies	-	-	-	-	37	15	3,435	1,718	9,228	9,228	16,507	13,189
	CBOs/ADPs	322	301	15	15	140	56	66	33	95	105	-	-
	Total	322	301	15	15	176	70	3,501	1,751	9,323	9,333	16,507	13,189
Sesame	Companies	21	12	-	-	6	5	11	4	13	10	-	-
	CBOs/ADPs	613	233	3	3	2	2	5	4	-	-	75	60
	Total	634	245	3	3	8	7	16	8	13	10	75	60
	G/Total	15,951	21,745	6,153	8,009	4,252	6,409	10,248	14,788	22,476	44,487	68,957	149,844

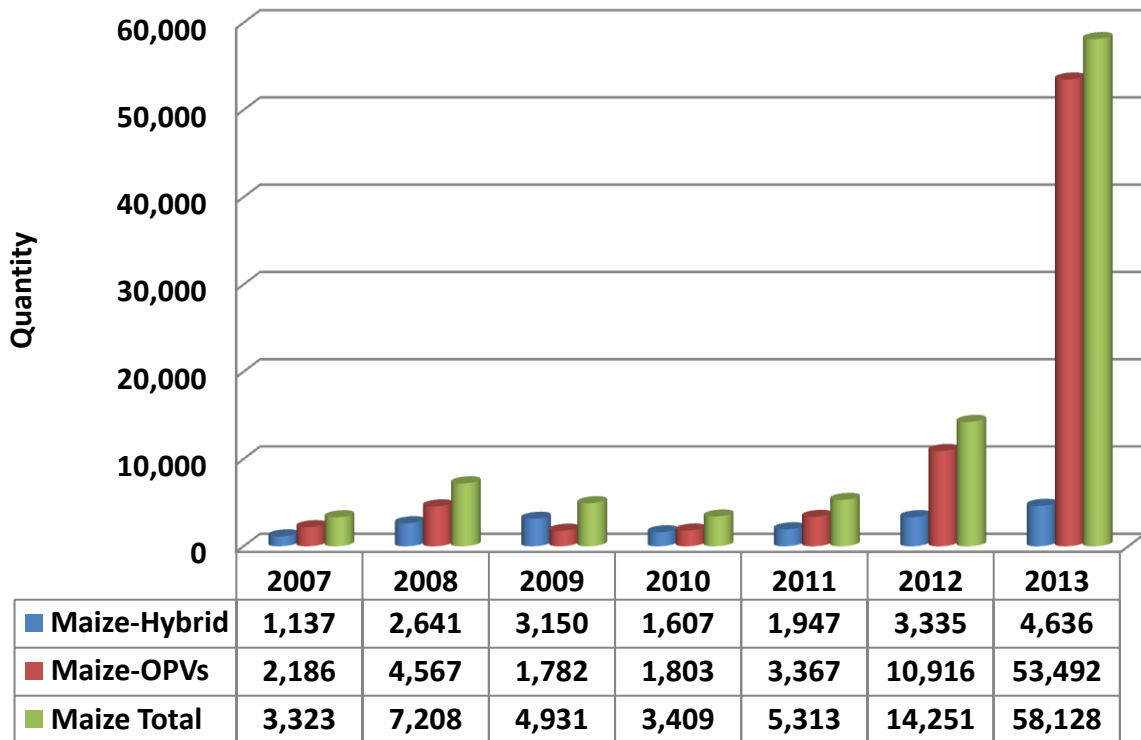
Source: NASC

Figure 3: National: Certified seed production by source and year (MT)



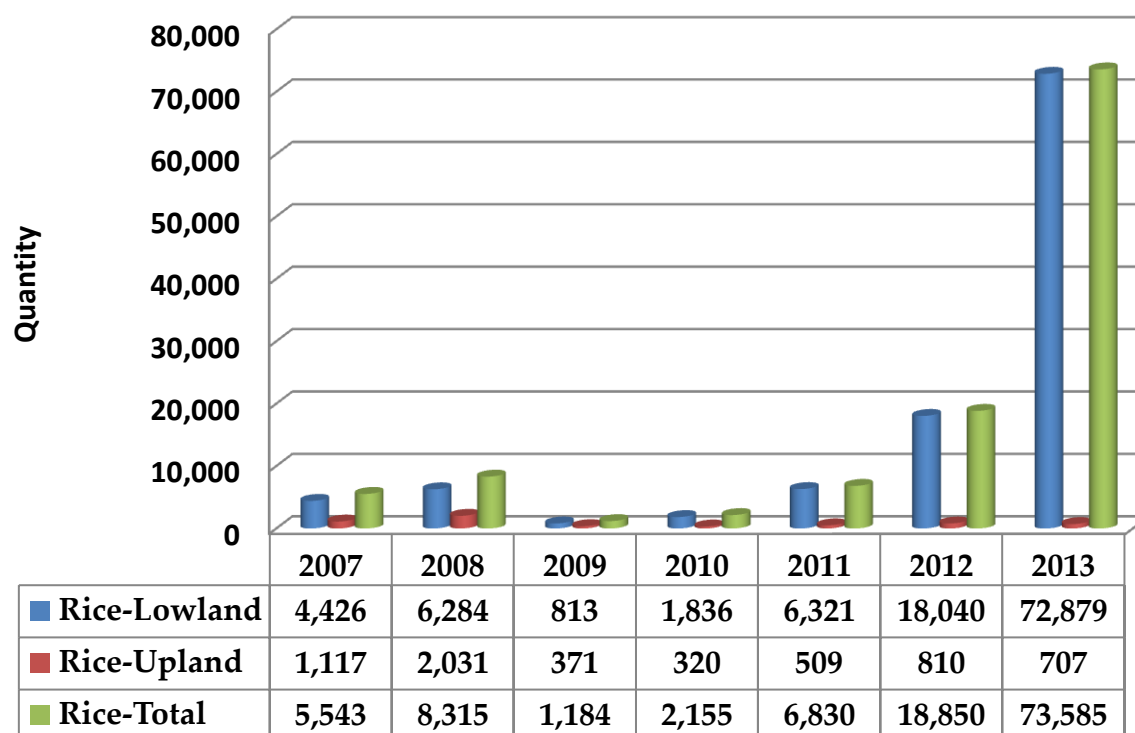
Source: NASC

Figure 4: National: Maize certified seed production by type and year (MT)



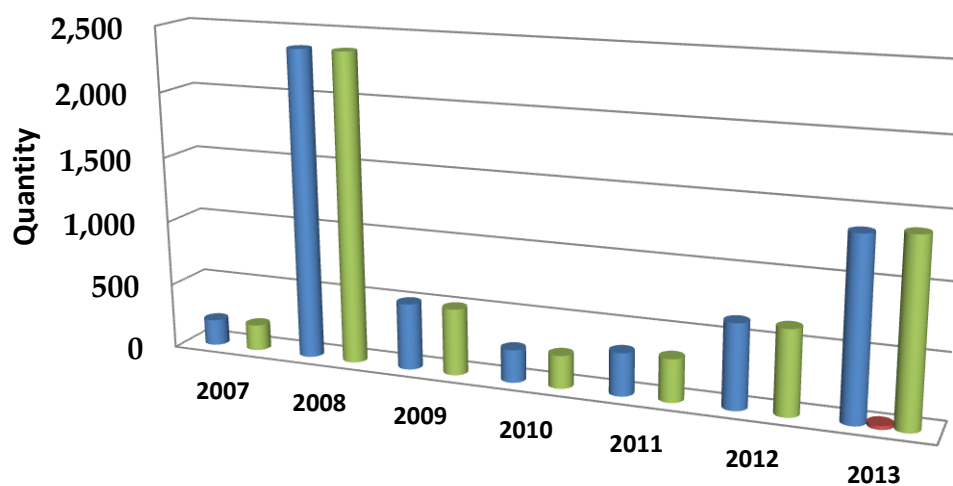
Source: NASC

Figure 5: National: Rice certified seed production by type and year (MT)

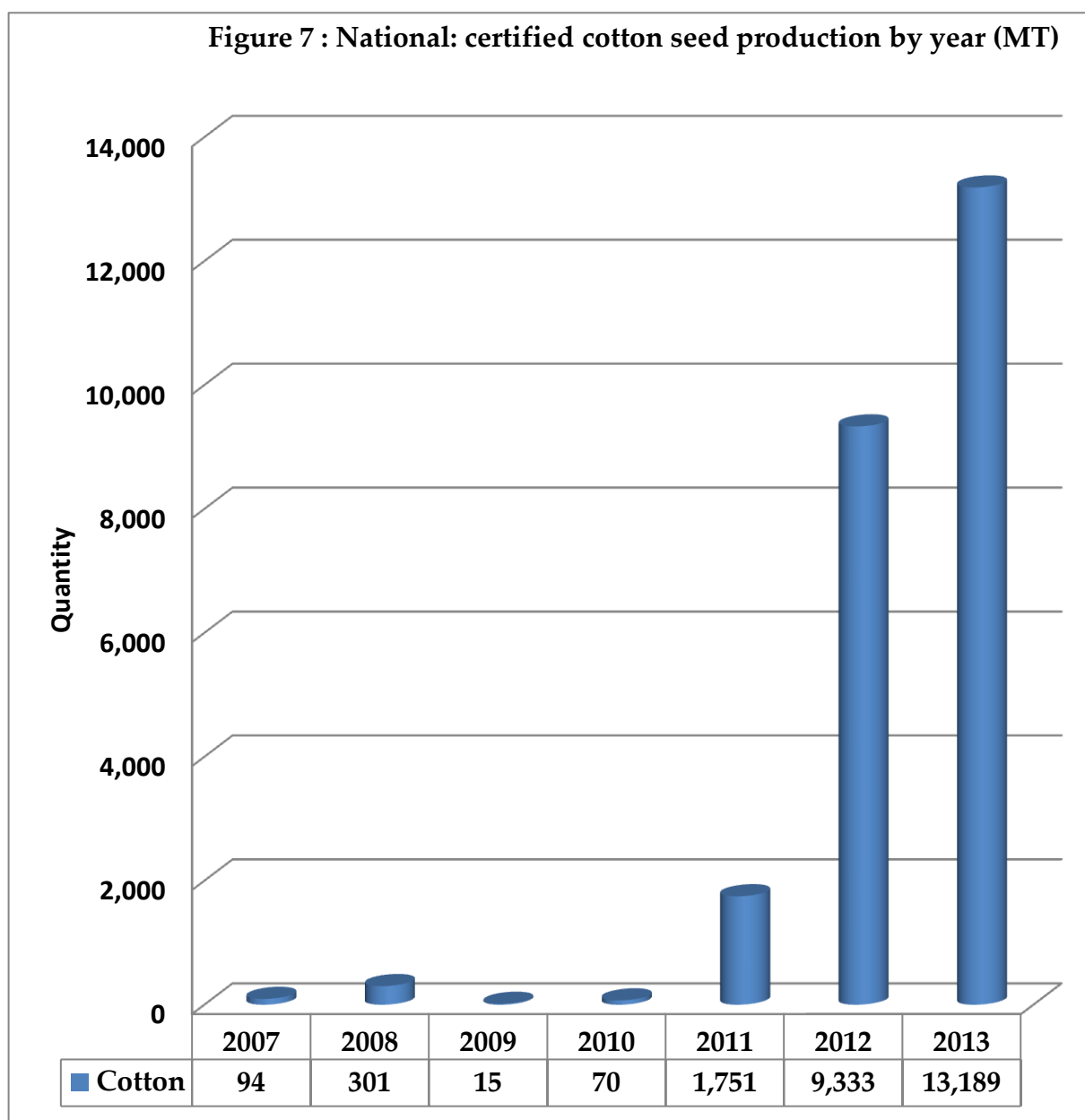


Source: NASC

Figure 6: National:Sorghum certified seed production by year (MT)



	2007	2008	2009	2010	2011	2012	2013
■ Sorghum OPVs	199	2,366	509	250	327	644	1,360
■ Sorghum Hybrid							28
■ Total	199	2,366	509	250	327	644	1,388



2.4.2 SEED COMPANIES: CERTIFIED SEED PRODUCTION TREND: 2007-2013

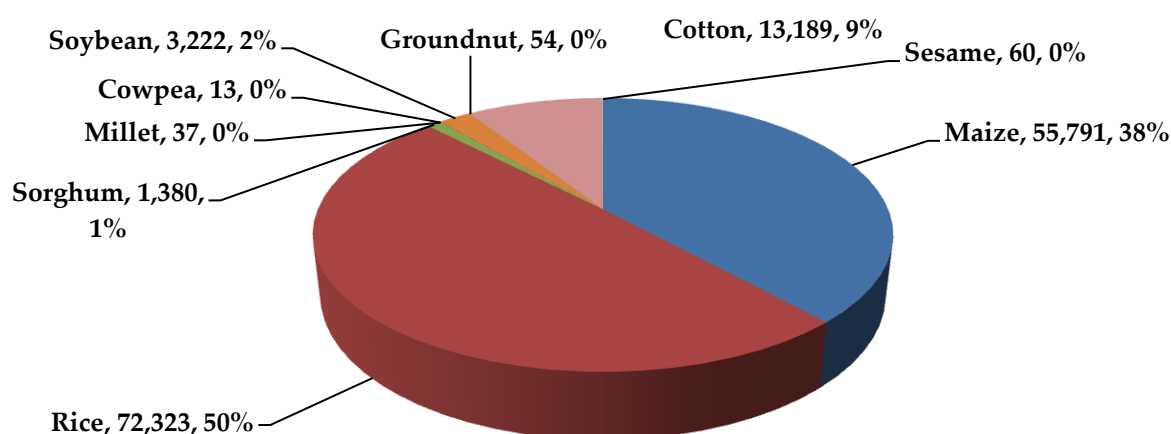
A total of **146,008 MT** of seed was certified in 2013 for the companies, compared to **42,286 MT** recorded in 2012. More rice seed **72,323 MT** (50 %) was certified closely followed by maize **55,791 MT** (38 %). Maize OPVs was **51,155 MT** (92 %) and maize hybrids **4,636 MT** (8 %) of the total companies' maize produced. For the first time, Industry giants **Premier** Seed Company, and **Dupont-Pioneer** produced commercial quantities-**28 MT** of hybrid sorghum that are expected to produce over 3 tons/ha compared to low yielding OPVs. Total companies' seed production increased by **245 %** in 2013 over 2012 attributed majorly to roles of seed companies effort in the supply of seed required for GES redemption. See tables and figures below

Table 18: Companies: Certified seed production by type and year (MT)

S/N	Seed crop	2007	2008	2009	2010	2011	2012	2013	% change 2012-2013
1.1	Maize-Hybrid	1,137	2,641	3,150	1,607	1,947	3,335	4,636	38
1.2	Maize-OPVs	942	1,130	1,429	869	2,669	10,336	51,155	394
1.3	Maize-Total	2,078	3,771	4,579	2,476	4,616	13,671	55,791	307
2.1	Rice-Lowland	2,158	1,524	679	1,355	5,526	17,271	71,737	310
2.2	Rice-Upland	475	282	258	48	115	375	587	57
2.3	Rice-Total	2,633	1,806	936	1,403	5,641	17,646	72,324	305
3.1	Sorghum OPVs	117	2,186	492	209	260	628	1,352	115
3.2	Sorghum Hybrid							28	na
3.3	Sorghum Total	117	2,186	492	209	260	628	1,380	121
4	Millet		295	764	21	41	74	37	-50
5	Cowpea	62	84	49	49	19	26	13	-50
6	Soybean	138	129	191	120	241	970	3,222	233
7	Groundnut	23	12	48	11	10	33	54	64
8	Cotton				15	1,718	9,228	13,189	54
9	Sesame		12		5	4	10	60	500
	Total	5,052	8,295	7,058	4,309	12,549	42,286	146,008	245

Figure 8: Companies: certified seed production share, 2013 (MT)

Total= 145,912

**Table 19: CBOs: Certified seed production by type and year**

S/N	Seed crop	2005	2006	2007	2008	2009	2010	2011	2012	2013
1	Maize-OPVs	681	1,005	1,244	3,437	353	933	698	580	2,338
2	Rice	1,005	1,647	2,909	6,509	227	752	1,189	1,209	1,262
3	Sorghum	55	77	82	180	17	41	67	18	8
4	Millet	77	130	161	707	175	131	107	98	61
5	Cowpea	70	105	92	995	65	104	48	62	36
6	Soybean	41	257	277	417	49	31	88	112	56
7	Groundnut	48	122	121	392	26	51	5	26	15
8	Cotton	5	47	94	301	15	56	33	105	
9	Sesame	8	13	19	233	3	2	4		60
	Total	2,012	3,442	5,070	13,420	1,043	2,100	2,239	2,210	3,836

Source: NASC

Table 20: CBOs: certified seed production by type and source, 2013 (MT)

S/N	CBOs Name	Maize	Rice	Sorghum	Millet	Cowpea	Soybean	Groundnut	Sesame	Total
1	CBARDP	43			40		2	7		92
2	IAR-CBSP	126								126
3	JAARDA	62	30		21	4			60	176
4	Kaduna ADP	120	206	8		9	21			364
5	KNARDA/IITA	31				14	18			63
6	MAAN	1,530								1,530
7	Nasarawa ADP	61	93							154
8	Osun ADP	69								69
9	Oyo ADP	24								24
10	Recognised Growers	118	3			4				126
11	RIFAN-Kebbi		930							930
12	SG 2000	14					8			21
13	Univ.Agric. Makurdi	64								64
14	WECARD-UNIMAID.	76				5	8	8		97
Total		2,338	1,262	8	61	36	56	15	60	3,836

Source: NASC

2.4.3 Seed prices

Table 21: Certified seed prices by type and year

s/n	Seed Type	Unit	2006	2007	2008	2009	2010	2011	2012	2013
1	Maize-Hybrid	1kg	151	155	171	174	191	197	240	240
2	Maize-OPVs	1kg	119	125	137	154	164	171	200	200
3	Rice	1kg	140	149	174	164	186	193	220	220
5	Sorghum	1kg	110	116	132	148	141	158	200	200
6	Millet	1kg	64	77	101	156	160	176	190	200
7	Cowpea	1kg	159	150	181	188	170	206	250	260
8	Soybean	1kg	128	132	150	170	165	191	240	240
9	Groundnut	1kg	233	238	238	350	320	488	350	350
10	Cotton	1kg	32	39	46	120	100	160	120	180
11	Sesame	1kg	127	136	160	325	470	300	-	-

Source: NASC

2.4.4 CAPACITY BUILDING

In 2013, 82 officers attended various training locally and overseas, 60 officers were trained locally while 22 officers participated in various courses organized overseas.

In addition, the Council organized training in seed certification and quality control for 100 Youth Corp members deployed to the various States and Regional offices to strengthen seed certification and quality control operation in their respective states of deployment.

The Council also organized training on **Global Positioning System (GPS)** for 68 participants from the seed companies and other agencies so as to ensure accurate determination of area of production by the seed producers.



Participants during training in seed certification and quality control for Youth Corp members



Participants in a group photograph with the Ag. Director General, NASC during a NASC/SEEDAN organized training on Global Position System (GPS)

Table 22: Capacity Building List, 2013

S/N	Course Title	No. Trained	Training Institute	Nature
1	Agricultural Project Monitoring & Evaluation	30	Agricultural and Rural Management Training Institute, ARMTI, Ilorin	Local
2	Workshop on Effective Service Delivery	30	Administrative Staff College of Nigeria (ASCON), Lagos	Local
3	Effective Leadership and Management Training	10	Accra, Ghana	Foreign
4	Successful Project Management	1	United Kingdom	Foreign
5	Successful Project Management	1	USA	Foreign
6	Seed Physiology and Technology	4	India	Foreign
7	Seed Physiology and Technology	1	South Africa	Foreign
8	Agricultural Community Leadership Development Training	1	South Korea	Foreign
9	Comprehensive Training on Hybrid Rice Production	2	China	Foreign
10	Seed Production and Management	1	China	Foreign
11	Rural Revitalization	1	Israel	Foreign
12	NASC-SEDAN organized training on GPS	68	Sheda, FCT	Local
13	Training on Seed Certification and Quarterly Control Operations for NYSC Corps members	100	Ibadan, Umudike, Jos and Zaria	Local

Total No. of Staff that participated in Local training = 228

Total No. of staff that participated in Foreign training = 22

2.4.5 INCEPTION WORKSHOP

A one-day Inception and Launch Workshop for the FAO TCP Project titled “Strengthening National Seed Systems in Nigeria” TCP/NIR/ 3403 was held at Bolingo Hotel and Towers on 9th October, 2013. The main objective of the Workshop was to bring together major seed industry stakeholders that would be involved in the implementation of the TCP project, explain in details the expected outcome and outputs of the project as well as activities to achieve the outputs; clarify the specific roles and responsibilities of stakeholders in the project implementation; and prepare a revised detailed work plan of activities in line with reality on the ground. The workshop was attended by 33 participants drawn from both public and private sector comprising - Institute of Agricultural Research/ABU Zaria, Lake Chad Research Institute, Maiduguri, National Agricultural Extension Research and Liaison Services/ABU Zaria; Programme Managers of Agricultural Development Programmes (ADPs) in the participating states (Ondo, Kaduna, Sokoto, Jigawa and Ebonyi), Private Seed Companies, Farmers Association, National Agricultural Seed Council(NASC), West Africa Seed Project (WASP) and Food and Agriculture Organisation (FAO) of the United Nations.



Group photograph of participants during the Inception and Launch workshop of “Strengthening National Seed System in Nigeria”

2.5.0 FINANCE AND ADMINISTRATION DEPARTMENT

The department is responsible for the overall management of the Council finance and human resources through the performance of under listed activities:

2.5.1 Staff Re-deployment: The services of 11 staff members were redeployed during the year. (See table below)

Table 23: Staff Re-Deployment list, 2013

S/No	Name of Officer	Former Posting	Present Posting
i.	Mr Sule Bulus	Regional Head, NASC, Zaria	Deputy Director, Seed Certification Dept, Headquarter
ii.	Mr. Okoli E.C.	Regional Head, NASC, Asaba	Deputy Director, Seed Coordination Department
iii.	Mr. Yusuf Hamisu	Regional Head, Gombe	Deputy Director, Seed Industry Development Dept, Headquarter
iv.	Mr. Towolawi Oluwole	Regional Head, NASC, Jos	Assistant Director, Seed Certification Dept., Headquarter
v.	Mr. Okalanwa R.I.	Assistant Director, NASC Ibadan	Regional Head, NASC, Umudike
vi.	Mr. Agboola A.A.	Assistant Director, Seed Certification Dept.	Regional Head, NASC, Ibadan
vii.	Mr. Adelere E.O.	CAO, NASC, Minna	Regional Head, Jos
viii.	Mrs. Adeleye Dupe	SAS , NASC, Asaba	SAS Ibadan
ix.	Mr. Abegunde Joseph	HEO (Admin) Asaba	HEO (Admin), Ibadan
x.	Mr. Oni Olarenwaju	AO II Sheda	AO II (Ibadan)
xi.	Mr Fasakin Babatunde	AO II Asaba	AO II Calabar

2.5.2 Appointment: 4 no. staff appointments were made to fill existing vacancies created by retirement, deployment or promotion of the officers formerly occupying such positions (See list below):

- i. Dr. S.E. Abimiku – Ag. Director (SCOR & MS) – appointed to fill the vacancy necessitated by the retirement of the former Director, Mrs G.O. Nwafor;
- ii. Mallam Ubandoma Hundu – Regional Head Zaria – appointed to fill the vacancy necessitated by the deployment of the former Regional Head, Mr Sule Bulus, to the Headquarters;
- iii. Mrs Nkwonta Nina Chinenye – Regional Head, Asaba – appointed to fill the vacancy created by the deployment of the former Regional Head, Mr E.C. Okoli to the Headquarters;

- iv. Mr. Zamba D. Samuel – Regional Head Gombe – appointed to fill the vacancy necessitated by the deployment of the former Regional Head, Mallam Hamisu Yusuf, to the Headquarters.

2.5.3 Secondment and Transfer of Service

- I. Mr. L. M. Bojuwon, Deputy Director (Accounts) was posted to the Council from the Ministry of Trade and Investments.
- II. Similarly, application for secondment by two staff of the council, Mr.. F.S. Okelola (SAO) and Mr. Bassey Unaowo (CAO) to CORAF/WECA (WASP) in Dakar Senegal and Commercial Agriculture in Abuja respectively were approved.
- III. Also, Mrs. A.T. Okelola (AO I) application for transfer of service to the council was approved.

2.5.4 Retirement

A total of 8 no staff retired from service during the year 2013

Table 24: Staff Retirement list, 2013

s/n	Name	Date Of Retirement	Rank	Remark
1	Olarewaju, O	15th March, 2013	PAS	Attainment of 60 years of age
2	Adeyemi, T	2 nd April, 2013	Chief Craftsman	Attainment of 60 years of age
3	Songodare, S	12 th April, 2013	PCS1	Attainment of 60 years of age
4	Dr. Madueke, B.O.	26 th July, 2013	Deputy Director	Attainment of 35 years in service
5	Mrs T.O. Sopitan	28 th July, 2013	Deputy Director	Attainment of 35 years in service
6	Mrs Nwafor, G.O.	31 st July, 2013	Director	Attainment of 60 years of age
7	Enyiazu, C.	12 th October, 2013	CAS	Attainment of 35 years in service
8	Engr. Babajide, O.	14 th November, 2013	Deputy Director	Attainment of 60 years of age

2.5.5 Promotion

A total of One Hundred and Sixty (160) staff comprising of One Hundred and Thirty Seven (137) Senior Staff and Twenty Three (23) Junior Staff were promoted during the year

2.5.6 Revenue

During the year 2013, the sum of ~~₦~~212,721,000.00 (Two Hundred Million, Seven Hundred and Twenty One Thousand Naira) was generated as revenue compared to ~~₦~~29,335,983.00 collected in 2012. The revenue collected was remitted to the Federal Government treasury.

2.5.7 Overhead

The sum of ~~₦~~68,039,688 (Sixty Eight Million, Thirty Nine Thousand, Six Hundred and Eighty Eight Naira only) was received as overhead cost in year 2013, compared to 72,848,529.99 (Seventy Two Million, Eight Hundred and Forty Eight Thousand,

Five Hundred and Twenty Nine Naira, Ninety Nine Kobo) received in year 2012 representing 0.1 % decrease. The unspent balance of N 101,893.01 (One Hundred and One Thousand, Eight Hundred and Ninety Three Naira, One kobo) was paid back to chest at the close of 2013 financial year

2.5.8 Personnel

The personnel head of expenditure received the total sum of ~~N~~583,096,034.32 (Five Hundred and Eighty Three Million, Ninety Six Thousand, Thirty Four Naira, Thirty Two Kobo) representing a decrease of 0.04 % when compared to the sum of 606,737,317 (Six Hundred and Six Million, Seven Hundred and Thirty Seven Thousand, Three Hundred and Seventeen Naira) received in year 2012. However, the un-utilized sum of N28, 874,417.04 (Twenty Eight Million, Eight Hundred and Seventy Four Naira, Four Hundred and Seventeen Naira, Four Kobo) was paid back to chest at the close of 2013 financial year.

2.5.9 Capital

The sum of N233, 936,886.00 (Two Hundred and Thirty Three Million, Nine Hundred and Thirty Six Million, Eight Hundred and Eighty Six Naira) was received for capital project implementation. At the end of the financial year, the closing balance sum of ~~N~~ 44,738.65 (Forty Four Thousand, Seven Hundred and Thirty Eight Naira, Sixty Five Kobo) was paid back to chest at the close of 2013 financial year

2.5.10 Audit Report: In line with extant regulation, the external auditors Layo Sipe and Co were invited to audit the Council's book of account for the year 2013. The final report has since been forwarded to the office of the Auditor General of the Federation, and Public Accounts Committee of the National Assembly for their necessary action.

Table 25: Companies: certified seed production by type and source, 2013 (MT)

S/N	Companies Name	Maize	Rice	Sorghu m	Millet	Cowpea	Soybean	Groundnut	Cotton	Sesame	Total
1	5SKYM	25									25
2	Akon		177								177
3	Al-Ganzaki	50	102								152
4	ARV		14								14
5	Arziki		810								810
6	Asmau	52	7	4			6				69
7	Ata'Afi		407								407
8	Bumfash		776								776
9	CADL	257									257
10	CANDEL		1,312								1,312
11	Champion	553	291	20							864
12	Chimande		533								533
13	Da-AllGreen	810	2,090	170			189				3,258
14	Dabiro	2,875	1,800	585							5,260
15	Daddo	209									209
16	Dandutse	1,345	6								1,351
17	DUPONT Pioneer	3		4							7
18	Ella Agro		370								370
19	EverGreen		3								3
20	FeedAll	158	1,887								2,045
21	Firstlets	960	735								1,695
22	Galawaki		236								236
23	GAWAL	3,941	3,026								6,967
24	Girmal		100								100
25	Gold Agric.	1,206	273				87				1,566
26	Goro	50	990								1,040
27	Green Gold		1,598								1,598
28	Greenspore	453	678		6	11	3	52			1,203
29	Happy Seeds	238	438								676
30	Inganchi	63	30		2	2					96
31	Inter-Harvest	53									53
32	ISWA Global	158	314								471
33	Iyadalim	123	60				15				198
34	Jammy Nagari	3,650	900	90			375				5,015
35	Jikur	145	55				35				235
36	Jomas	45	90	14			15				164
37	Kojoli		1,462								1,462
38	Lumiere		82								82
39	Maina	180	1,240				86				1,505
40	Mamora	35	102								137
41	Manoma	280	600				8				888
42	Marsa	323	1,248								1,571
43	Maslaha	5,653	2,496								8,149
44	M'Billa	125									125
45	McLord		178								178
46	Meltdown		750								750
47	Moyesam		309								309
48	Nagari	459	1,062								1,521

Continues on next page

Table 25: Companies: certified seed production by type and source, 2013 (MT)

	Companies	Maize	Rice	Sorghum	Millet	Cowpea	Soybean	Groundnut	Cotton	Sesame	Total
49	Nagogo	1,928		281							2,209
50	Ni'IMA	313	2,133								2,446
51	Notore	608	779								1,387
52	Nyam Agric.	135	156	30			30				351
53	Oko Global	279	155								433
54	Olam		1,805								1,805
55	Perfect Impact	626	404								1,030
56	Phenerow		213								213
57	Premier	4,148	4,800	102			377				9,426
58	Quality Agro		63								63
59	Rahama	100	1,290	3	6		15				1,414
60	Ramus Gwanah		305								305
61	Romarey	32	1,861								1,892
62	SA'A Seeds	303			23						326
63	Salami Alada	25	60								85
64	Samlak	395	945								1,340
65	Savannah	1,960	3,897								5,857
66	Seed Project	1,099	2,574								3,673
67	SeeddCo	35									35
68	SHARE	136	377								513
69	SIA Farm	48									48
70	Sourvenir	253	102				39	2			395
71	SpringField	8,655	3,089	77			210				12,031
72	Strategic		204								204
73	SUNIO Plant	170									170
74	Sylva Ejezie		5								5
75	Tago Agro	281	291								572
76	Tecni Seeds	298	1,552								1,849
77	Terratiga	69									69
78	Tirendin	2,333	4,335								6,668
79	Tri Seeds		1,109								1,109
80	Value Seeds	864	2,205								3,069
81	Ventoll		248								248
82	Vitae Seeds	623	1,061								1,684
83	WACOT	5,115	6,036				1,734		13,189		26,074
84	Wadata		336								336
85	Wan-Nyikwagh		302								302
86	Zee Seeds	491									491
	Total	55,791	72,323	1,380	37	13	3,222	54	13,189		146,008

Source: NASC